



STEVENS
INSTITUTE of TECHNOLOGY
THE INNOVATION UNIVERSITY®

The Sign Language Portal

CS 546 A
Group 23
Computer Science
11/11/2019





The Team



Ronald Fernandes



Sejal Vyas



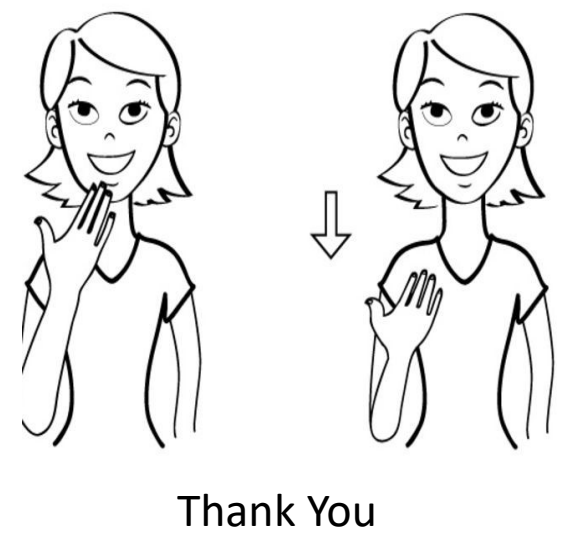
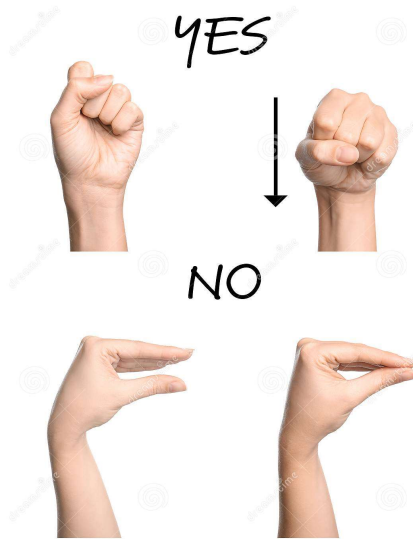
Viveksinh Solanki



Kevin John



Sign Languages





What?

1. Speech/Text to sign translation
2. Interactive sign language learning
3. Allow anyone to contribute any sign language



Why?

- One-Stop-Shop for:
 1. Current: one-way real-time sign language translation
Future: two-way real-time sign language translation
 2. Learn any sign language
 3. Open crowdsourced database of multiple sign languages



Who?

1. Businesses
2. Developers
3. Anyone!



How?

1. User can talk/type in any supported language and our portal will display corresponding sign language
2. Learning module allows user to learn supported sign languages from anywhere at anytime
3. Open database of sign languages, which can be accessed by anyone from anywhere



Features?

➤ **Translation module:**

- Option to choose from different spoken languages as input
- Option to choose different sign languages as output
- Input by text or by voice

➤ **Contribution module:**

- Option to contribute to different sign languages
- Upload image/gif/short clips of sign language
- Add corresponding word/symbol meaning



Cont..

➤ **Learning module [From voice/text to sign translation]:**

- Option to choose from different sign languages to learn
- 3 different levels of learning: 1) Beginner 2) Intermediate 3) Advanced
- Scoring/ progress tracking based on completed modules



Cont..

➤ Profile module:

- Display user information
- User preferences
- Display Contributions: approved/pending approval
- Progress/scores tracker
- Profile views
- Badges: i) Test ii) Contribution





Cont..

➤ **Tests module:**

- Option to take tests for any sign language
- 3 different levels of tests: 1) Beginner 2) Intermediate 3) Advanced
- Scoring/Progress tracking

➤ **Admin module:**

- Can perform all above mentioned functionalities
- Additional feature: Can approve/reject sign language translation requests/ contributions



Future / Extra Features

- Two-way communication in real time
- Interactive Chatbot



Q & A



STEVENS
INSTITUTE *of* TECHNOLOGY
THE INNOVATION UNIVERSITY®

stevens.edu